



Exchange House, 31 - 33 Star Street, Ware SG12

£1,250 Per month



1



1

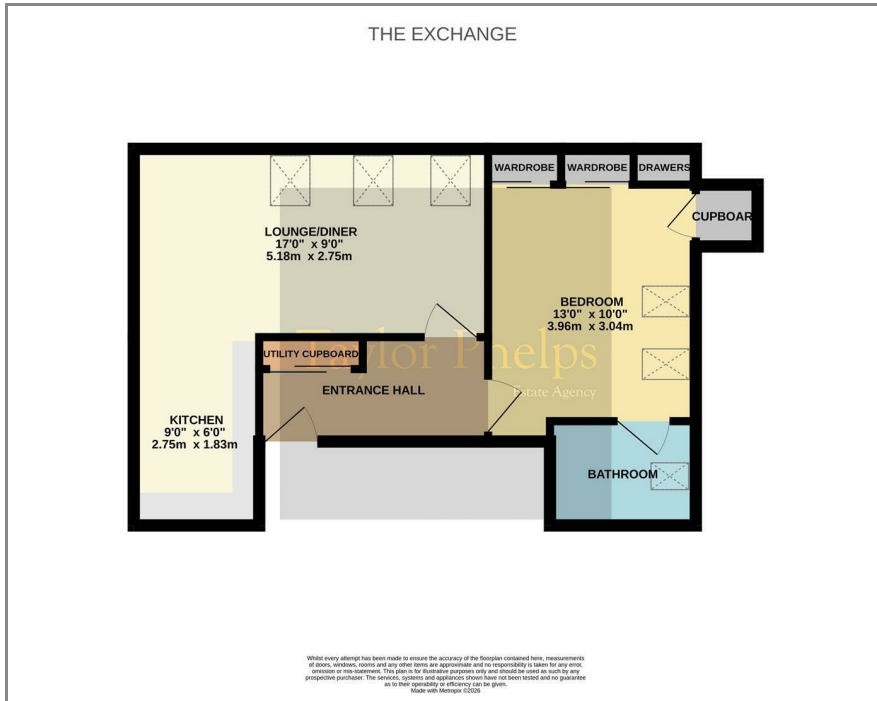
Taylor Phelps

Estate Agency

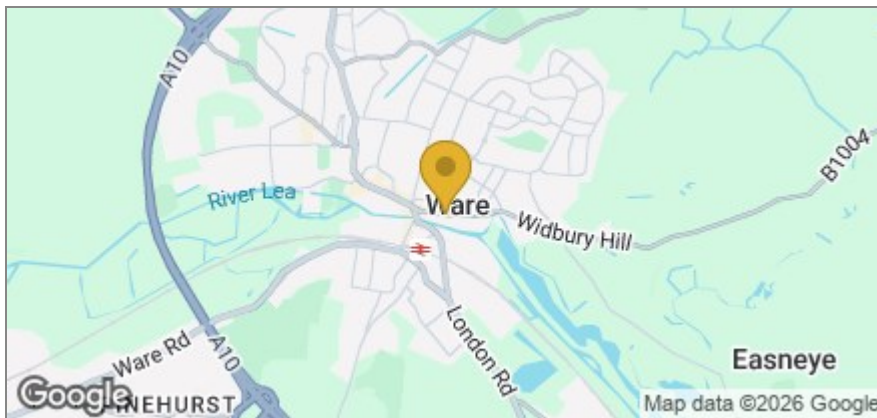
Taylor Phelps

Estate Agency

Floor Plan



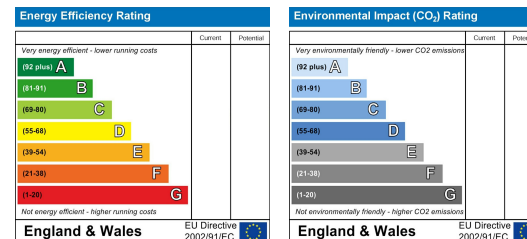
Area Map



Taylor Phelps are delighted to offer a collection of Brand New high spec apartments close to Ware high street and town centre. Each apartment benefits from designer kitchens, luxurious bathroom suites and bespoke fitted wardrobes. This development is positioned conveniently for the high street amenities and Ware train station which serves both Hertford East and London's Liverpool Street. One bedroom apartments from £1250 per calendar month.



Energy Efficiency Graph



These particulars, whilst believed to be accurate are set out as a general outline only for guidance and do not constitute any part of an offer or contract. Intending purchasers should not rely on them as statements of representation of fact, but must satisfy themselves by inspection or otherwise as to their accuracy. No person in this firm's employment has the authority to make or give any representation or warranty in respect of the property.

01920 459000

hello@taylorphelps.co.uk

5 Frenchs Yard, Amwell End, Ware, Hertfordshire, SG12 9HP

www.taylorphelps.co.uk

